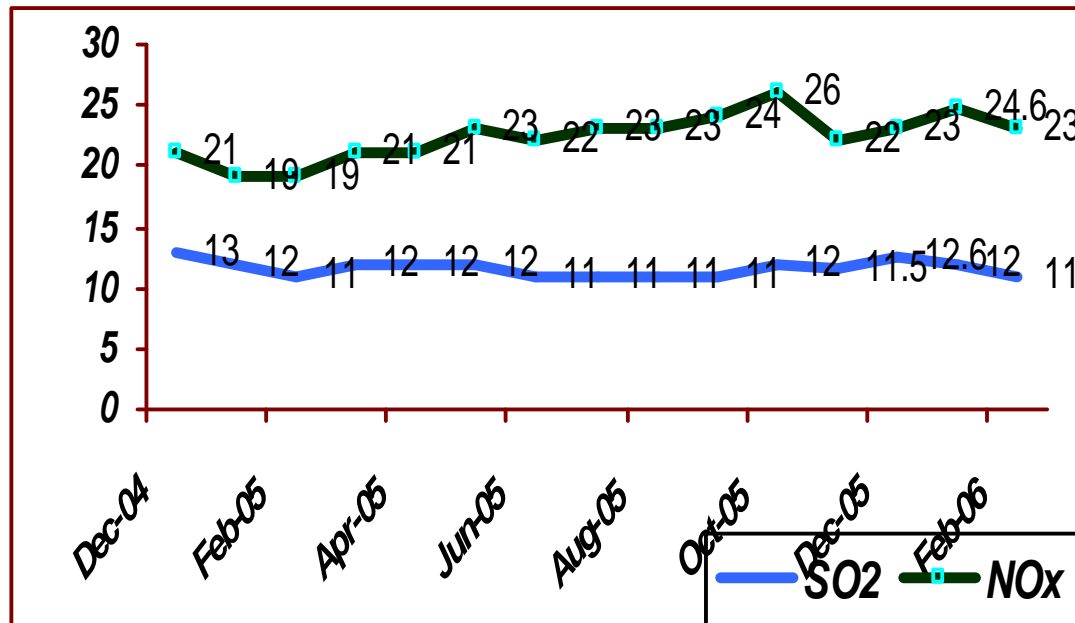
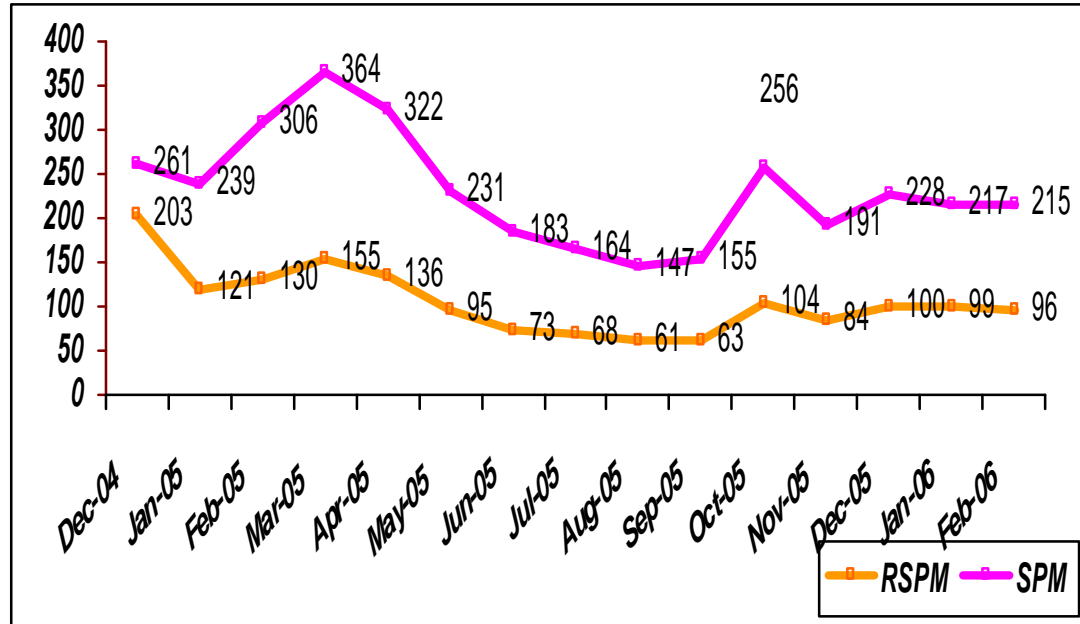


AMBEINT AIR QUALITY MONITORING
RESULTS
OF
AHMEDABAD CITY

SR. NO	LOCATION OF STATION	AGENCY
1	L. D. Engineering College, Ahmedabad (Under NAMP)	CPCB + GPCB
2	Naroda GIDC, Ahmedabad (Under NAMP)	CPCB + GPCB
3	Cadila Narol, Ahmedabad (Under NAMP)	CPCB + GPCB
4	Naroda GIDC, Ahmedabad	GIDC
5	Odhav GIDC, Ahmedabad	GIDC
6	Gujarat Vepari Mahamandal, Odhav, Ahmedabad	Association
7	GIDC, VATVA, Ahmedabad	Association
8	Reliance Industries Ltd., Naroda GIDC, Ahmedabad	RELIANCE
9	Ahmedabad Electricity Co. Ltd.,	AEC
10	Nehru bridge Traffic Booth, Ahmedabad	GPCB
11	Mukesh Industries, Narol, Ahmedabad	GPCB
12	R.C. technical High school, Mirzapur	CPCB + GPCB
13	Sardaben Hospital, Saraspur	CPCB + GPCB
14	Behrampura, old NEERI office	CPCB + GPCB

AAQM AT L. D. Engineering College (NAMP project)

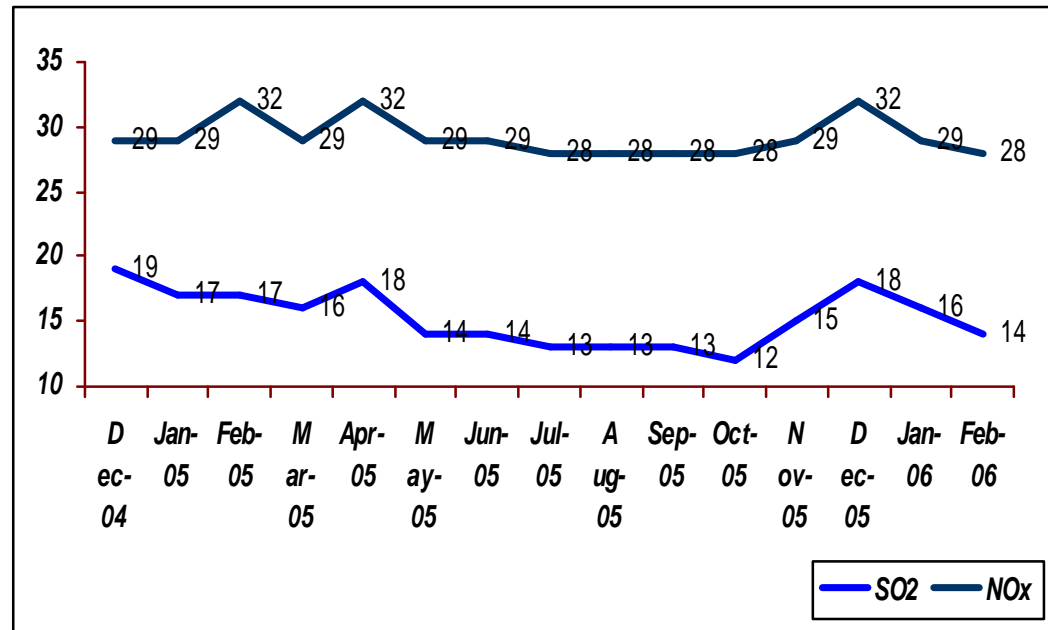
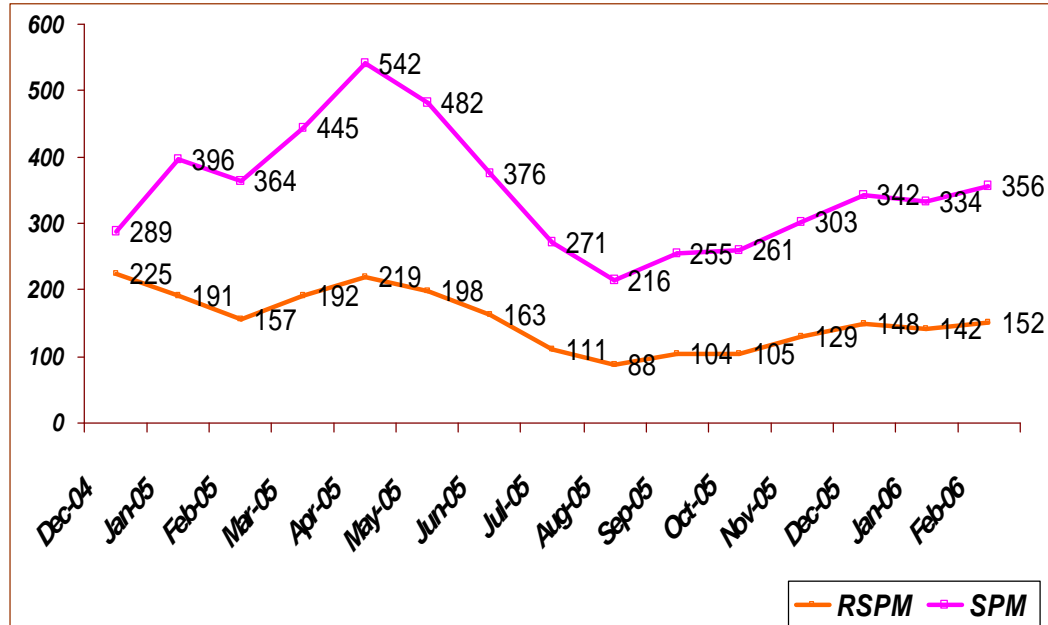


PARAMETER (LIMIT)	POSITION ON FEB-06	
SPM (200)	215	7.5 % HIGH
RSPM (100)	96	WITHIN LIMIT
SO2 (80)	11	WITHIN LIMIT
NOX (80)	23	WITHIN LIMIT

RESIDENTIAL
CPCB + GPCB

RESULTS ARE EXPRESSED IN MICROGRAM PER NORMAL CUBIC METER

AAQM AT NARODA GIDC, Above Police Chowki, (NAMP Project)



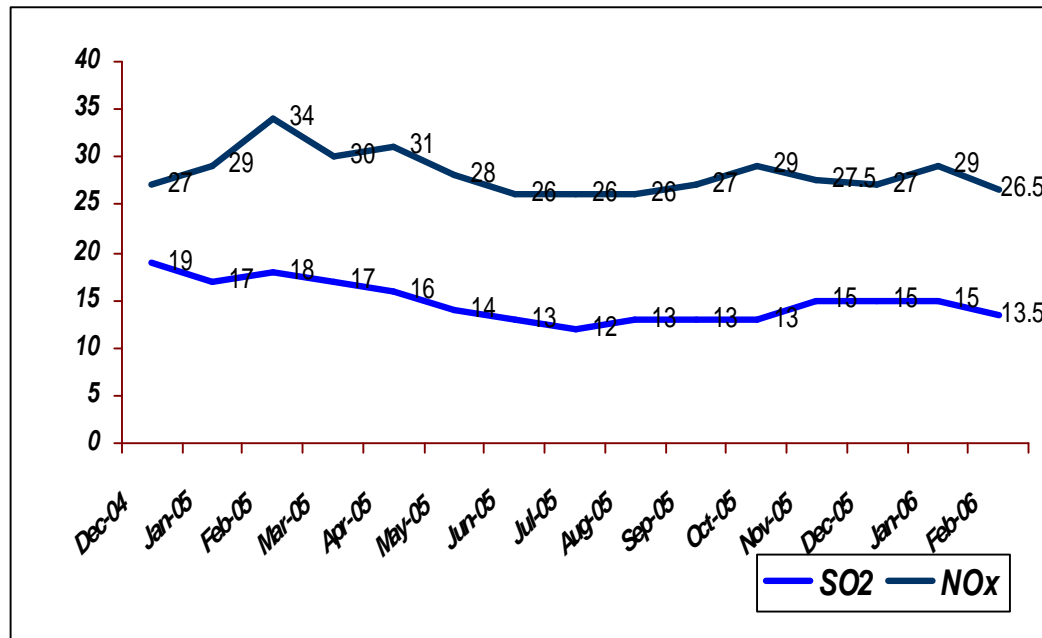
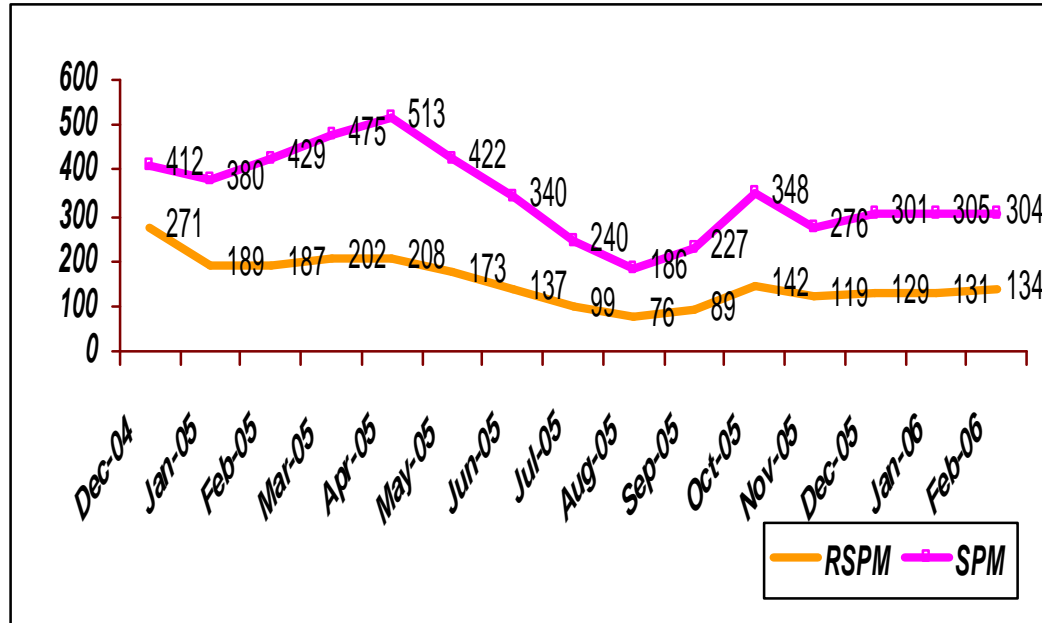
PARAMETER (LIMIT)	POSITION ON FEB-06	
SPM (500)	356	WITHIN LIMIT
RSPM (150)	152	1 % HIGH
SO2 (120)	14	WITHIN LIMIT
NOX (120)	27.75	WITHIN LIMIT

INDUSTRIAL

CPCB + GPCB

RESULTS ARE EXPRESSED IN MICROGRAM PER NORMAL CUBIC METER

AAQM AT CADILA (Narol) (NAMP Project)



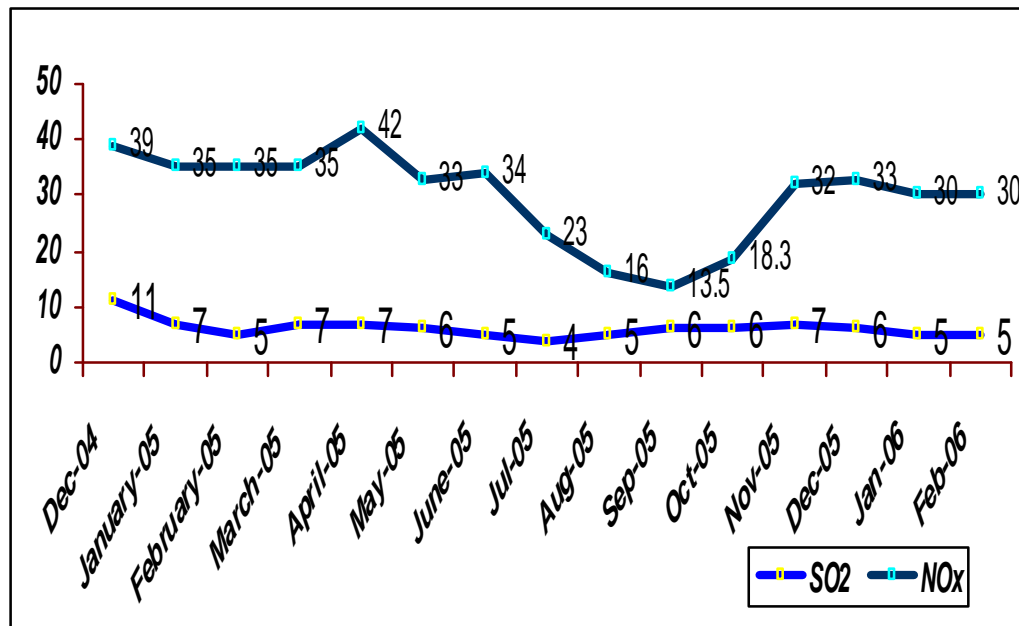
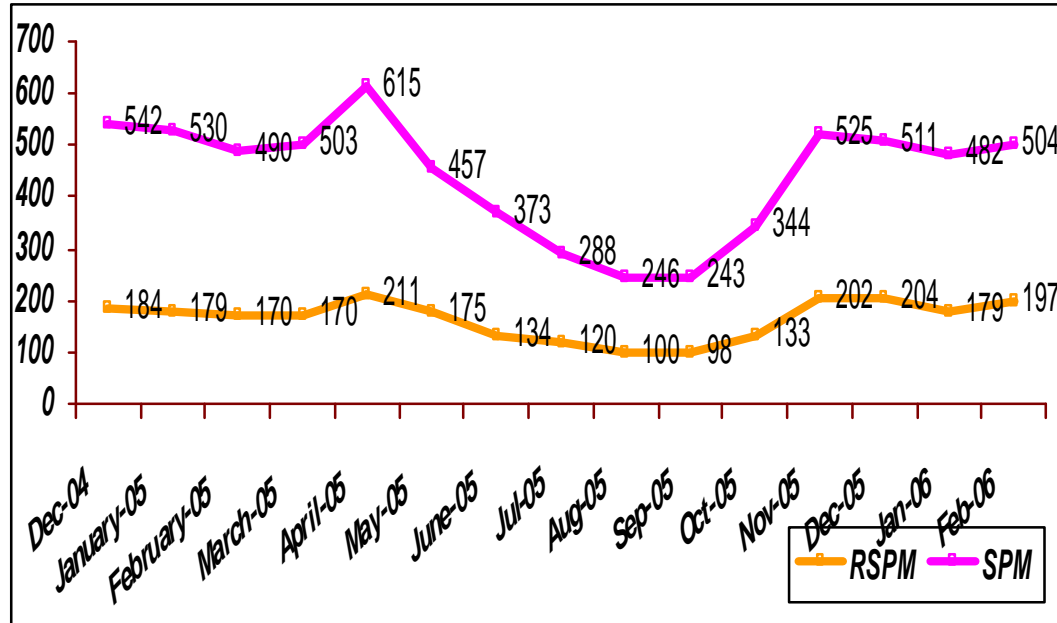
PARAMETER (LIMIT)	POSITION ON FEB-06	
SPM (200)	304	52 % HIGH
RSPM (100)	134	34 % HIGH
SO2 (80)	13.5	WITHIN LIMIT
NOX (80)	26.5	WITHIN LIMIT

RESIDENTIAL

CPCB + GPCB

RESULTS ARE EXPRESSED IN MICROGRAM PER NORMAL CUBIC METER

AAQM AT NEHRUBRIDGE ASHRAM ROAD

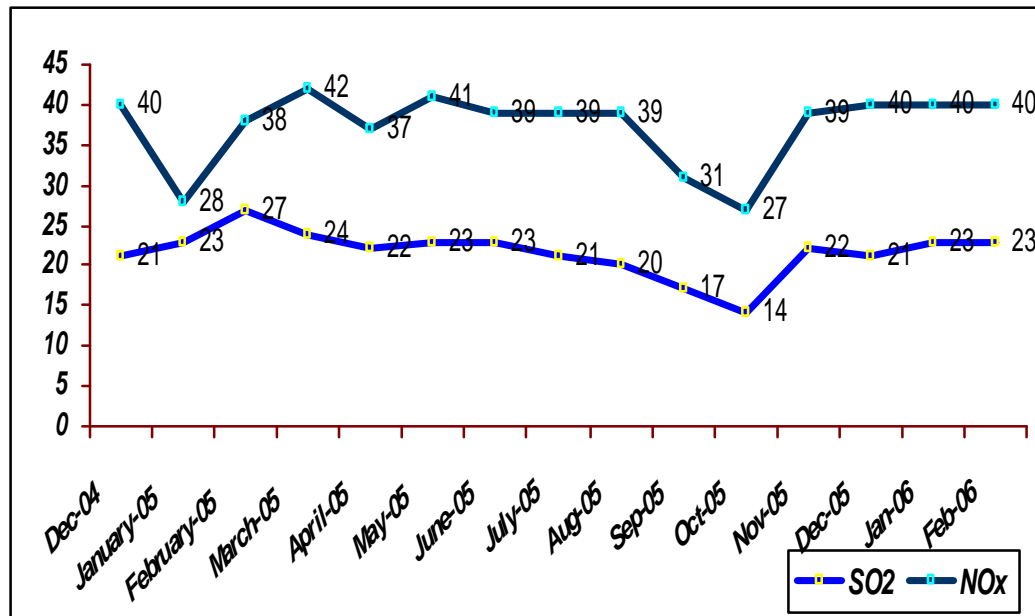
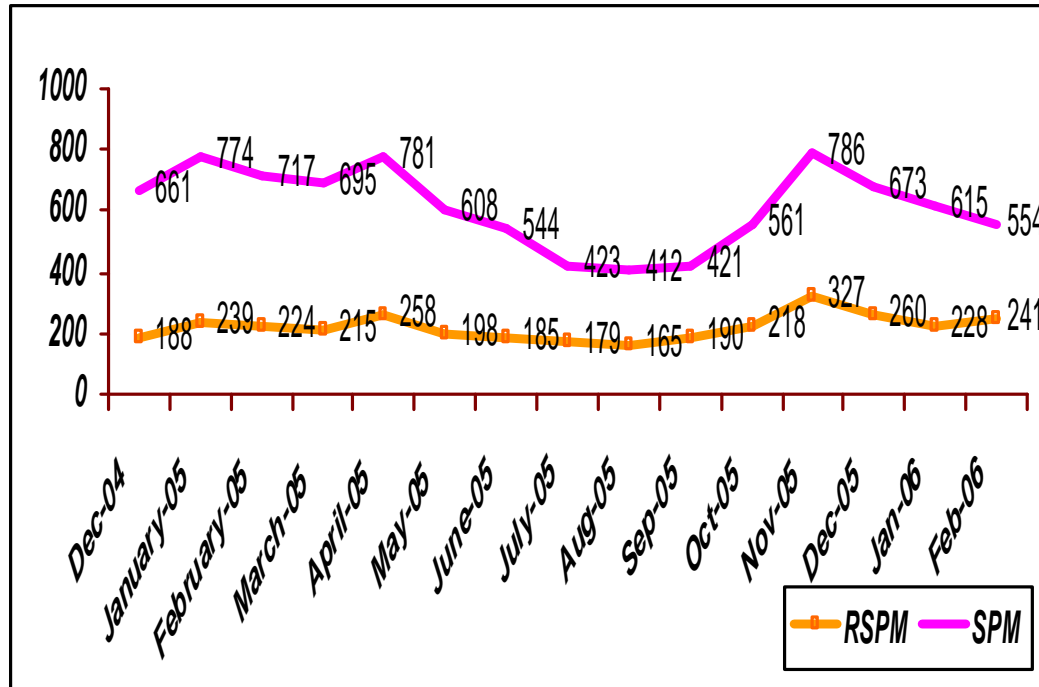


PARAMETER (LIMIT)	POSITION ON FEB-06	
SPM (200)	504	152 % HIGH
RSPM (100)	197	97 % HIGH
SO2 (80)	4.8	WITHIN LIMIT
NOX (80)	30.1	WITHIN LIMIT

RESIDENTIAL
GPCB

RESULTS ARE EXPRESSED IN MICROGRAM PER NORMAL CUBIC METER

AAQM AT MUKESH INDUSTRIES, NAROL

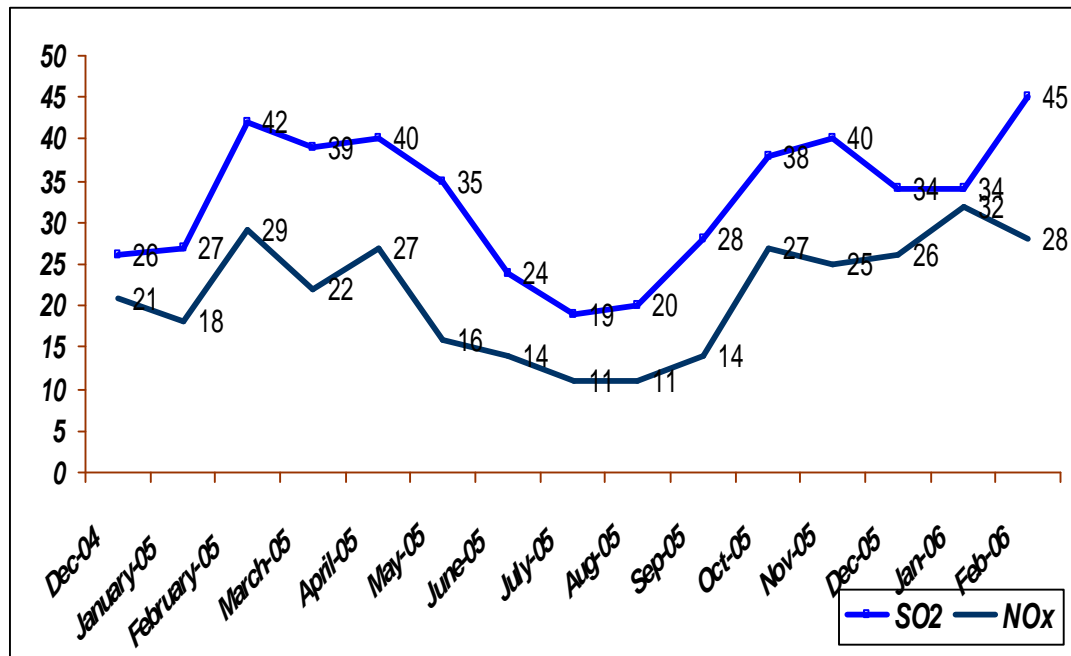
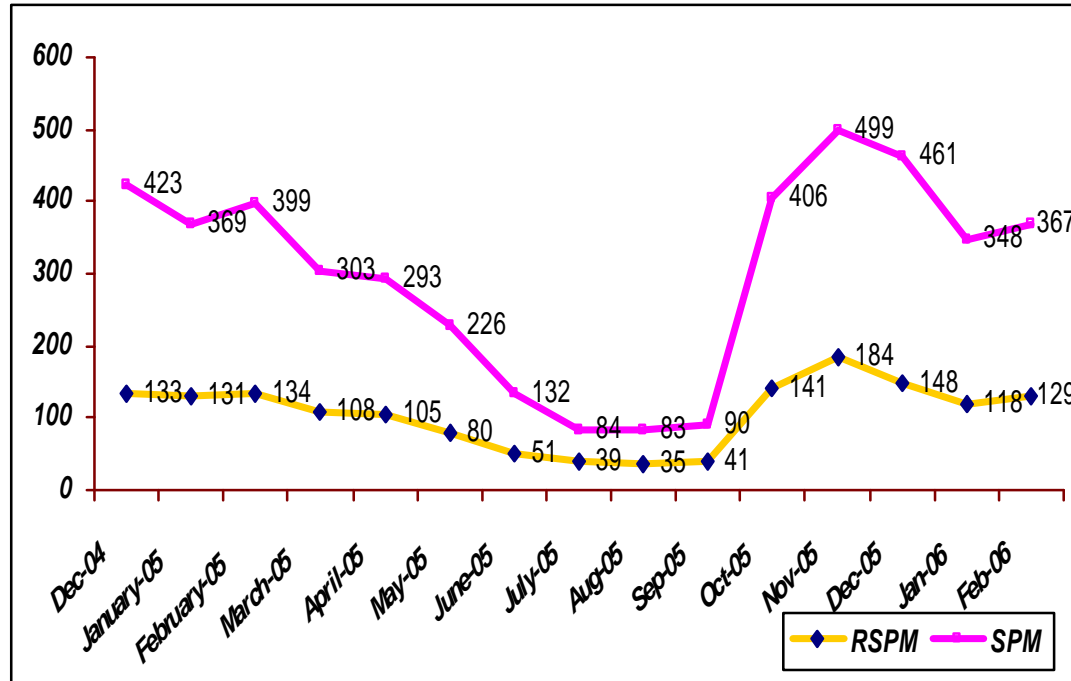


PARAMETER (LIMIT)	POSITION ON FEB-06	
SPM (500)	554	11 % HIGH
RSPM (150)	241	60 % HIGH
SO2 (120)	23	WITHIN LIMIT
NOX (120)	39.7	WITHIN LIMIT

INDUSTRIAL
GPCB

RESULTS ARE EXPRESSED IN MICROGRAM PER NORMAL CUBIC METER

AAQM AT AHMEDABAD ELECTRICITY CO. LTD, SABARMATI



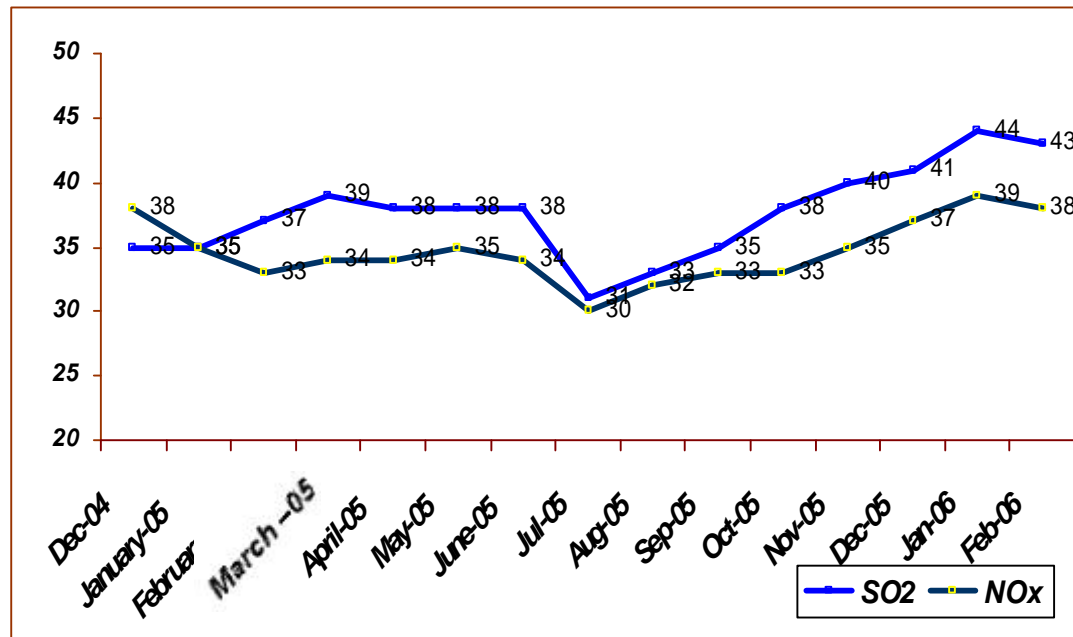
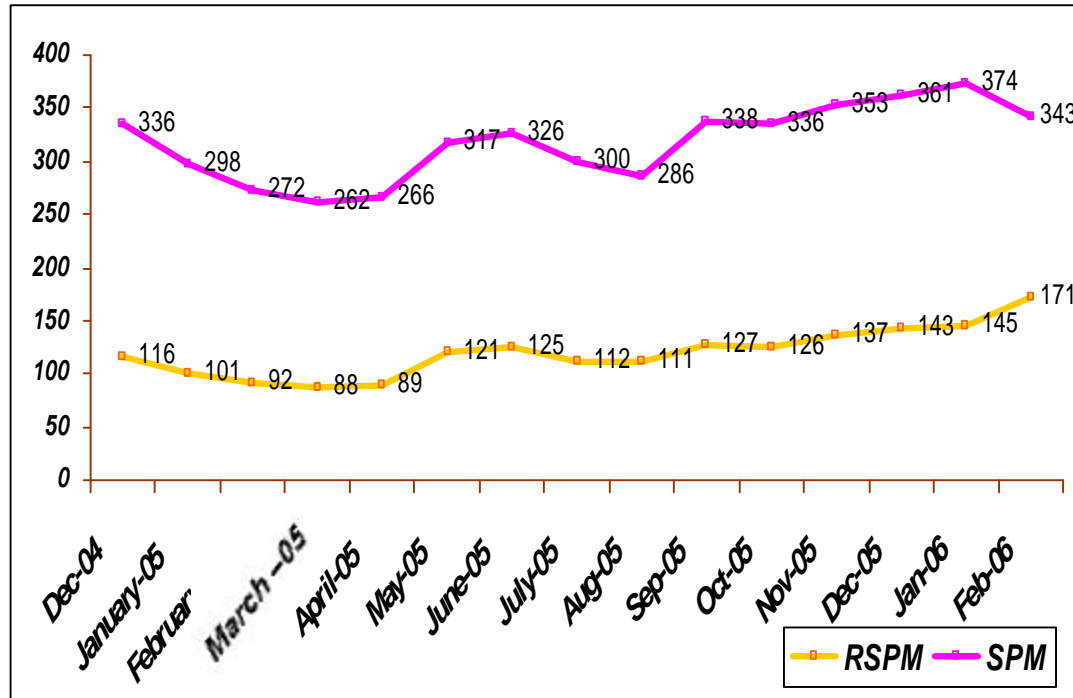
PARAMETER (LIMIT)	POSITION ON FEB-06	
SPM (200)	367	83 % HIGH
RSPM (100)	129	29 % HIGH
SO2 (80)	45	WITHIN LIMIT
NOX (80)	28	WITHIN LIMIT

RESIDENTIAL

AEC

RESULTS ARE EXPRESSED IN MICROGRAM PER NORMAL CUBIC METER

AAQM AT GESCOS Ltd. GIDC, Vatva

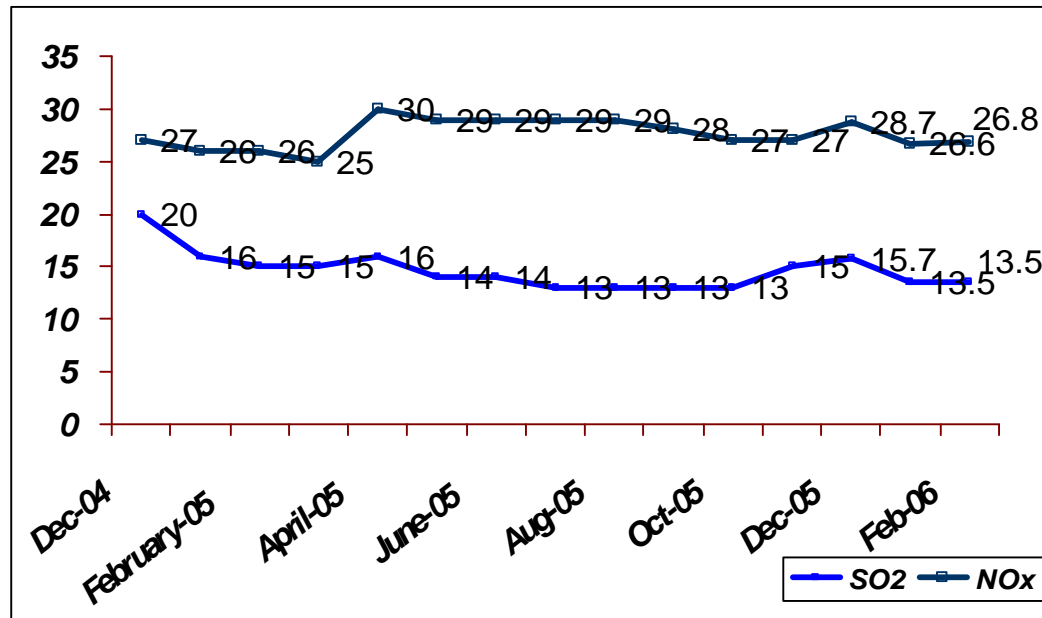
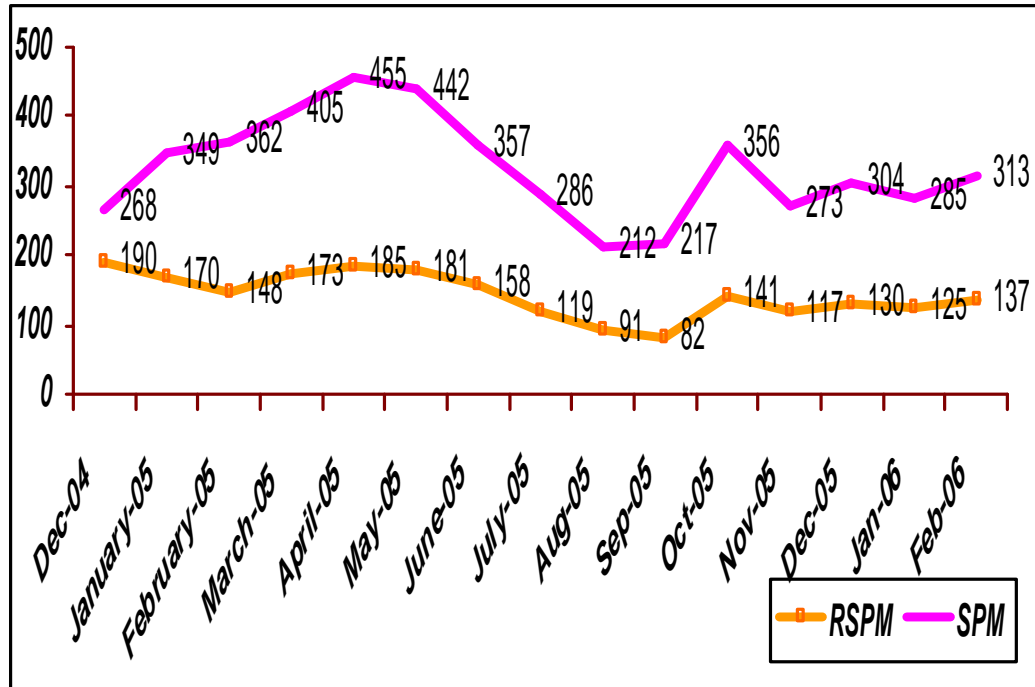


PARAMETER (LIMIT)	POSITION ON FEB-06	
SPM (500)	343	WITHIN LIMIT
RSPM (150)	171	14 % HIGH
SO2 (120)	43	WITHIN LIMIT
NOX (120)	38	WITHIN LIMIT

INDUSTRIAL
Association

RESULTS ARE EXPRESSED IN MICROGRAM PER NORMAL CUBIC METER

AAQM AT
Naroda GIDC,
Block No. B/4,
Office of the Dy.
Exe. Eng., Naroda
GIDC

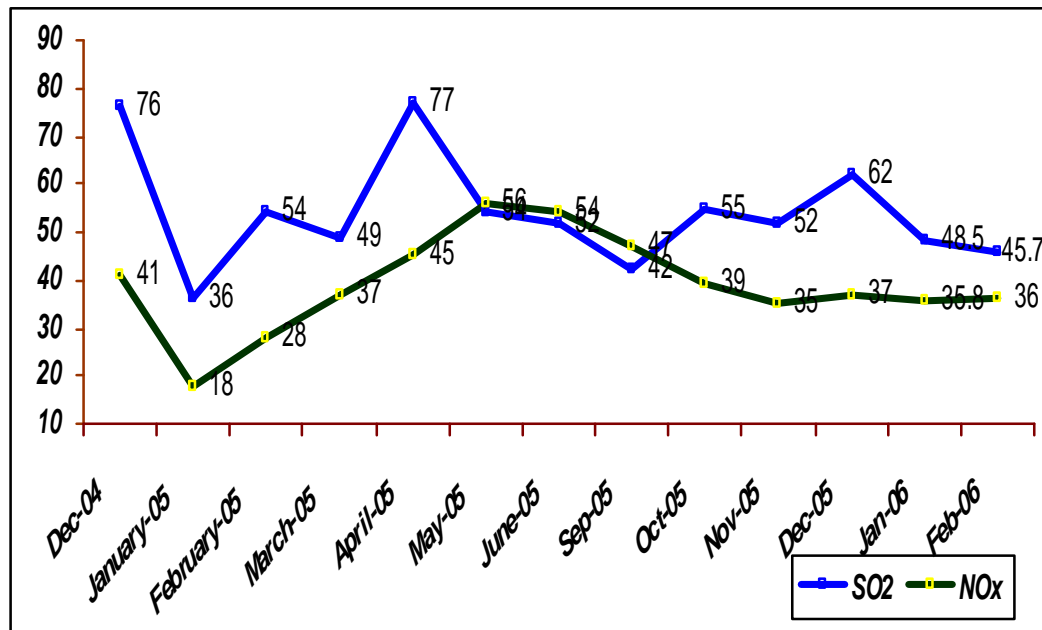
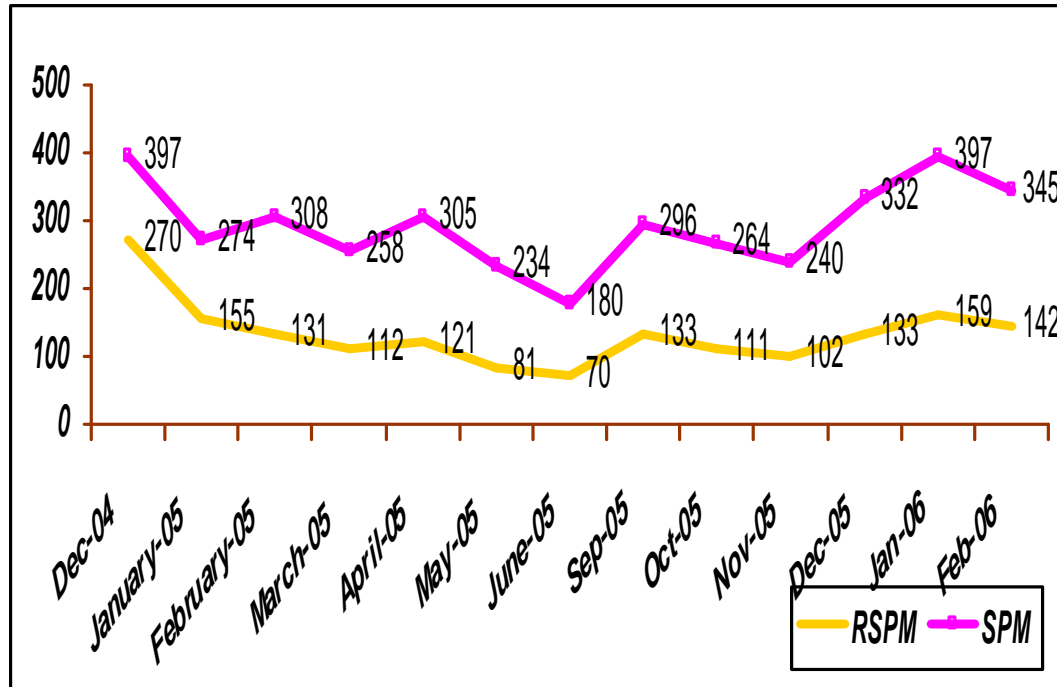


PARAMETER (LIMIT)	POSITION ON FEB-06	
SPM (500)	313	WITHIN LIMIT
RSPM (150)	137	WITHIN LIMIT
SO2 (120)	13.5	WITHIN LIMIT
NOX (120)	26.75	WITHIN LIMIT

INDUSTRIAL
GIDC

RESULTS ARE EXPRESSED IN MICROGRAM PER NORMAL CUBIC METER

AAQM AT GVMSAV Ltd., CETP-Odhav Road



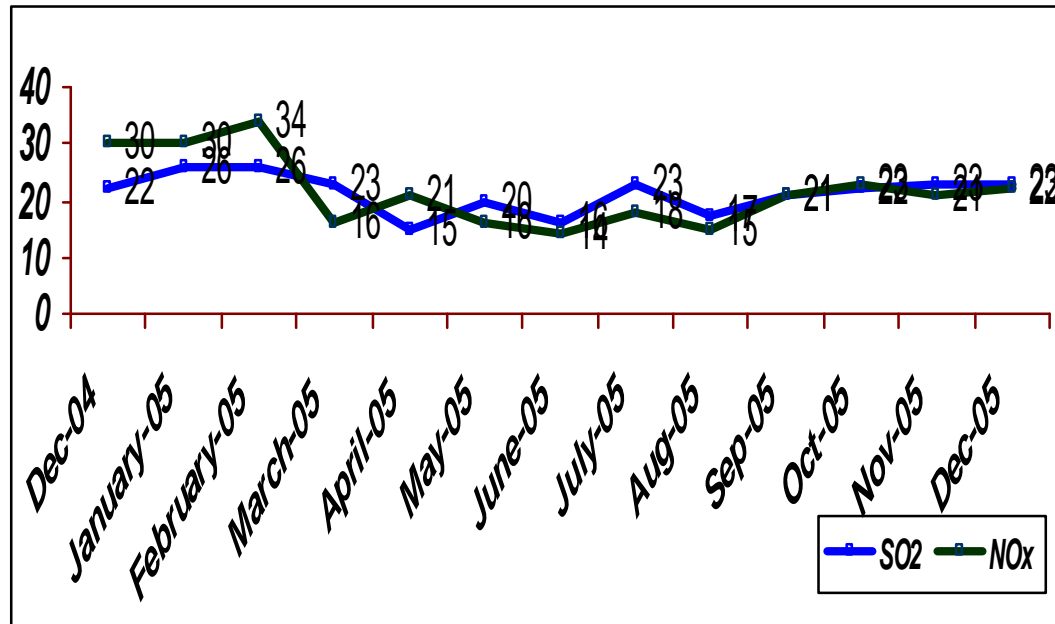
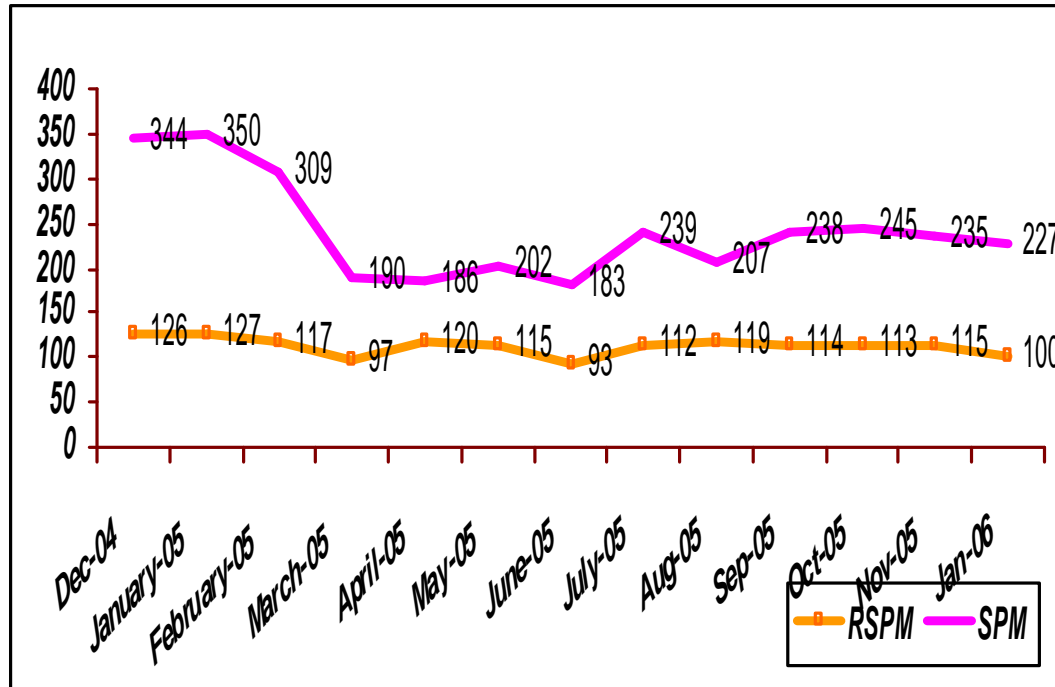
PARAMETER (LIMIT)	POSITION ON FEB-06	
SPM (500)	345	WITHIN LIMIT
RSPM (150)	142	WITHIN LIMIT
SO2 (120)	45.7	WITHIN LIMIT
NOX (120)	36	WITHIN LIMIT

INDUSTRIAL

Association

RESULTS ARE EXPRESSED IN MICROGRAM PER NORMAL CUBIC METER

AAQM AT RELIANCE INDUSTRIES LTD., NARODA GIDC

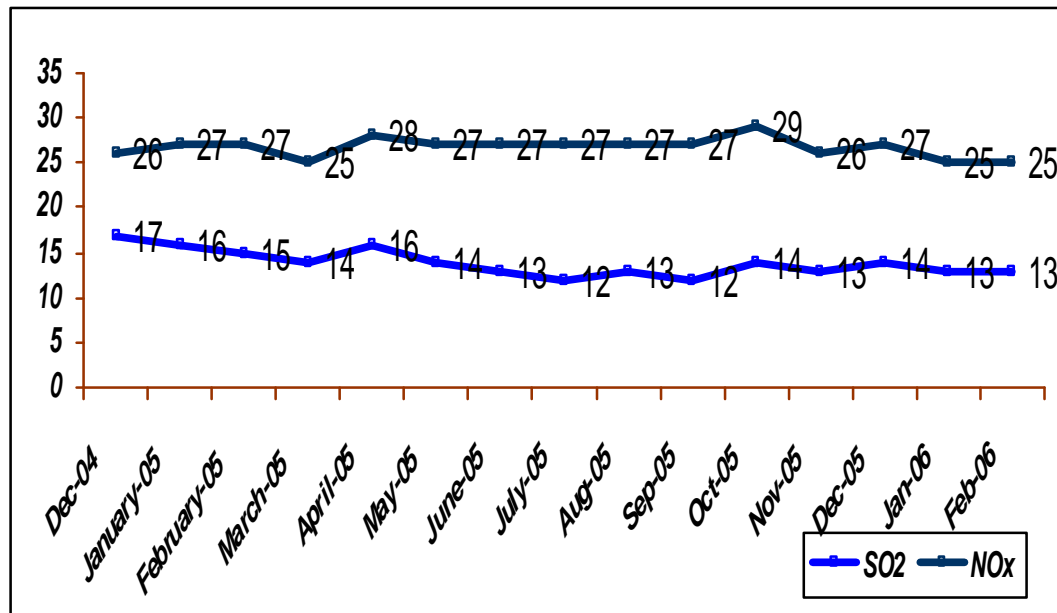
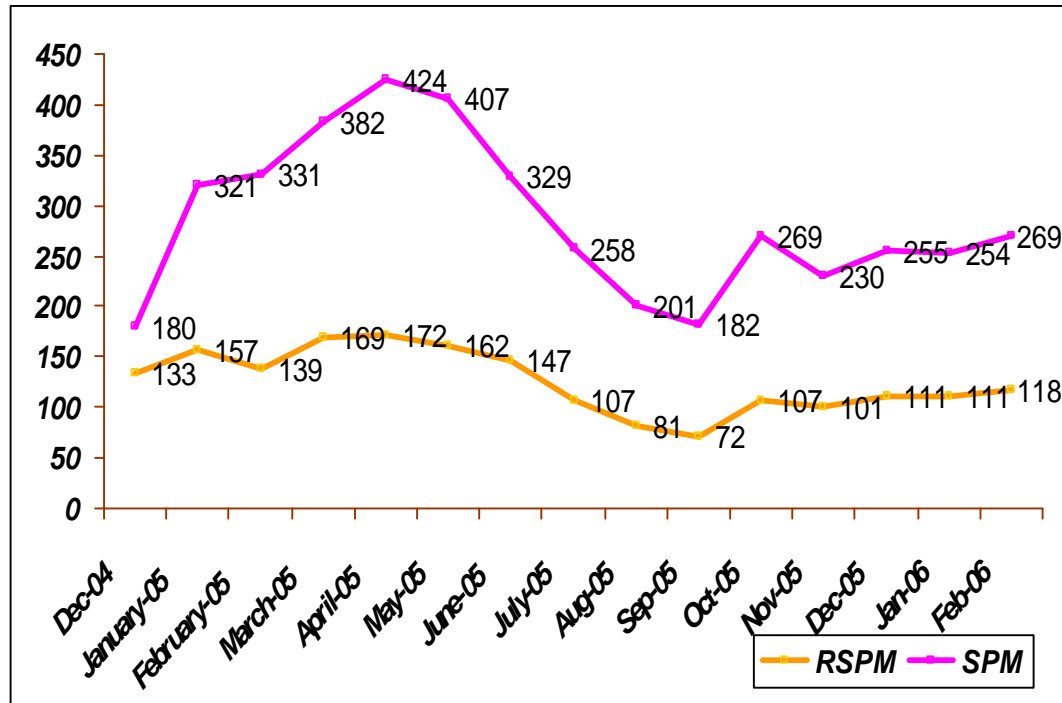


PARAMETER (LIMIT)	POSITION ON DEC-05	
SPM (500)	227	WITHIN LIMIT
RSPM (150)	100	WITHIN LIMIT
SO2 (120)	23	WITHIN LIMIT
NOX (120)	22	WITHIN LIMIT

**INDUSTRIAL
RELIANCE**

RESULTS ARE EXPRESSED IN MICROGRAM PER NORMAL CUBIC METER

AAQM AT ODHAV, GIDC

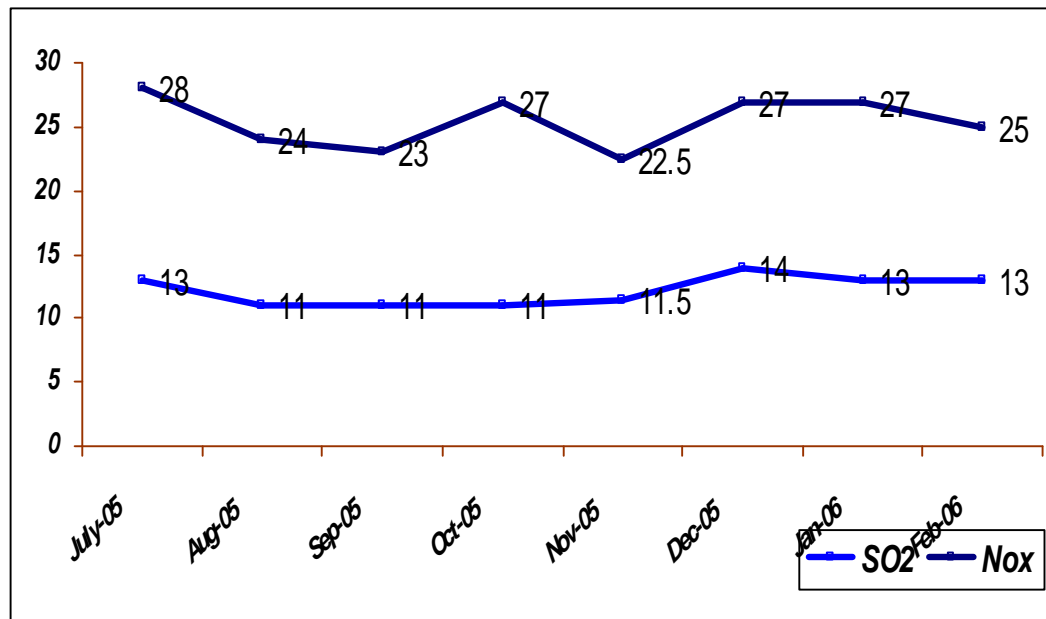
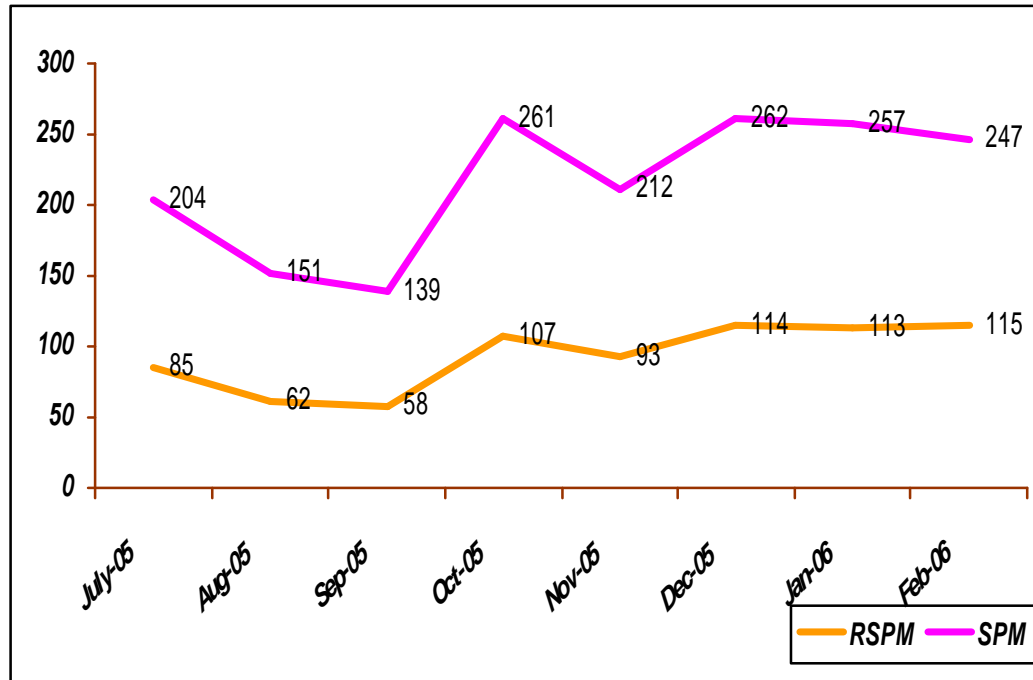


PARAMETER (LIMIT)	POSITION ON FEB-06	
SPM (500)	269	WITHIN LIMIT
RSPM (150)	118	WITHIN LIMIT
SO2 (120)	12.7	WITHIN LIMIT
NOX (120)	25	WITHIN LIMIT

**INDUSTRIAL
GIDC**

RESULTS ARE EXPRESSED IN MICROGRAM PER NORMAL CUBIC METER

AAQM AT R C Technical Mirzapur (NAMP project)

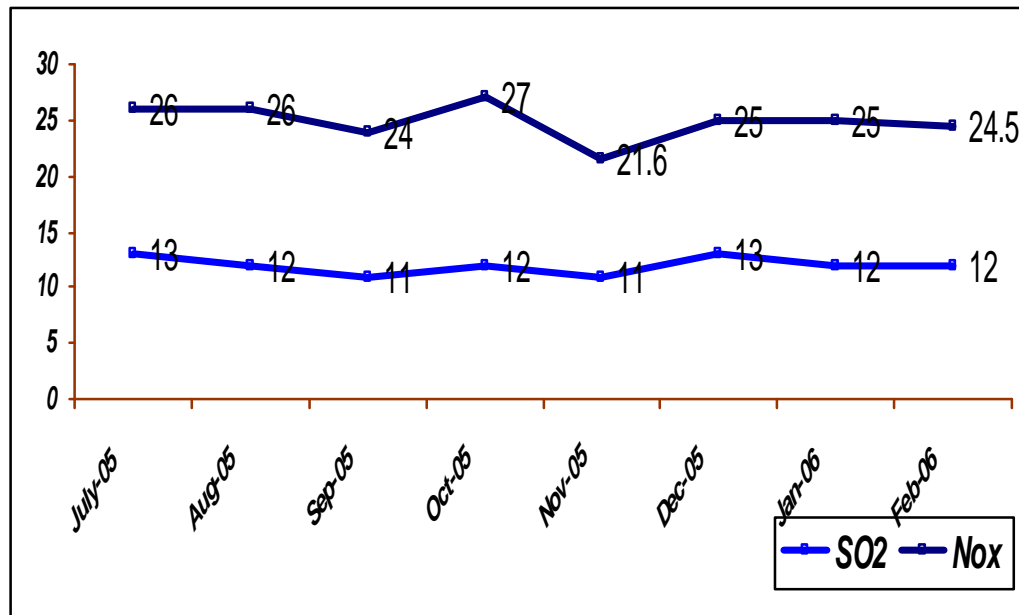
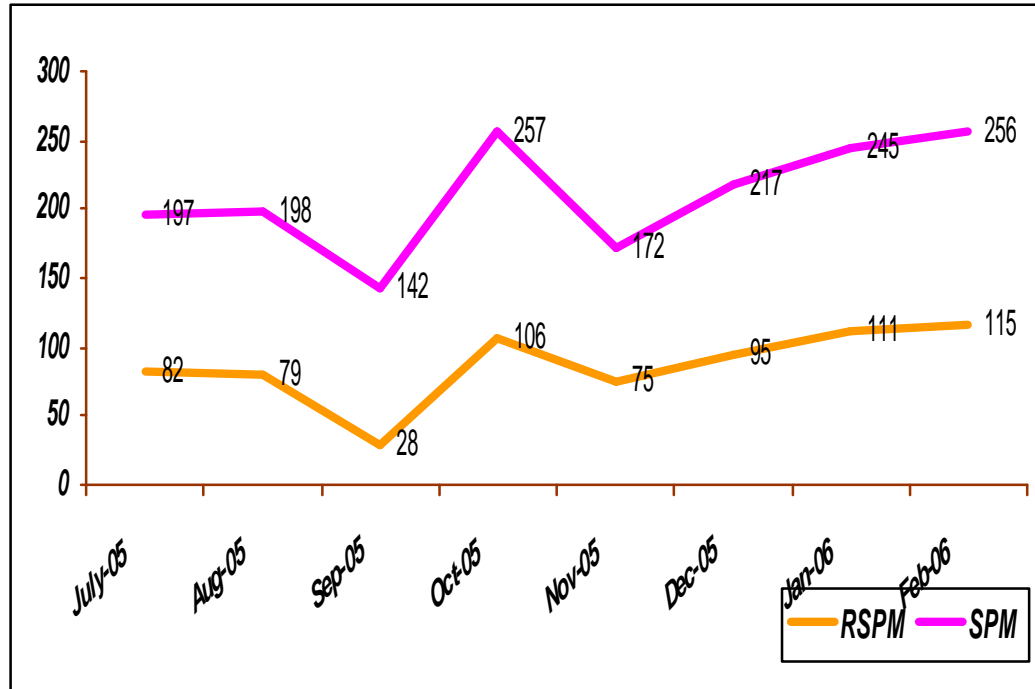


PARAMETER (LIMIT)	POSITION ON FEB-06	
SPM (200)	247	23.5 % HIGH
RSPM (100)	115	15 % HIGH
SO2 (80)	13	WITHIN LIMIT
NOX (80)	25	WITHIN LIMIT

RESIDENTIAL
CPCB + GPCB

RESULTS ARE EXPRESSED IN MICROGRAM PER NORMAL CUBIC METER

AAQM AT Sardaben Hospital, Saraspur (NAMP project)



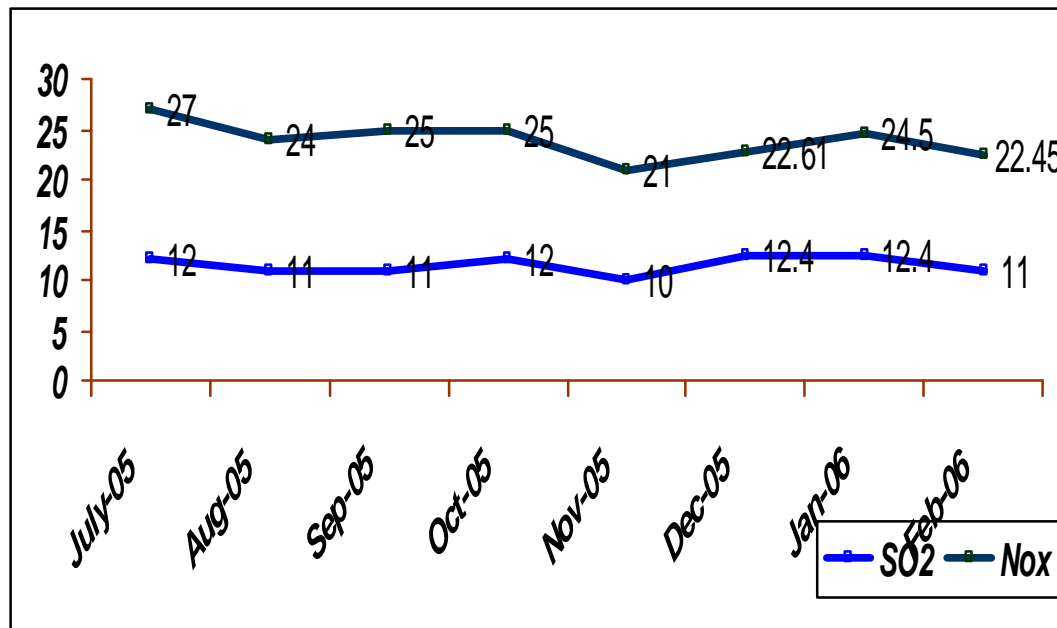
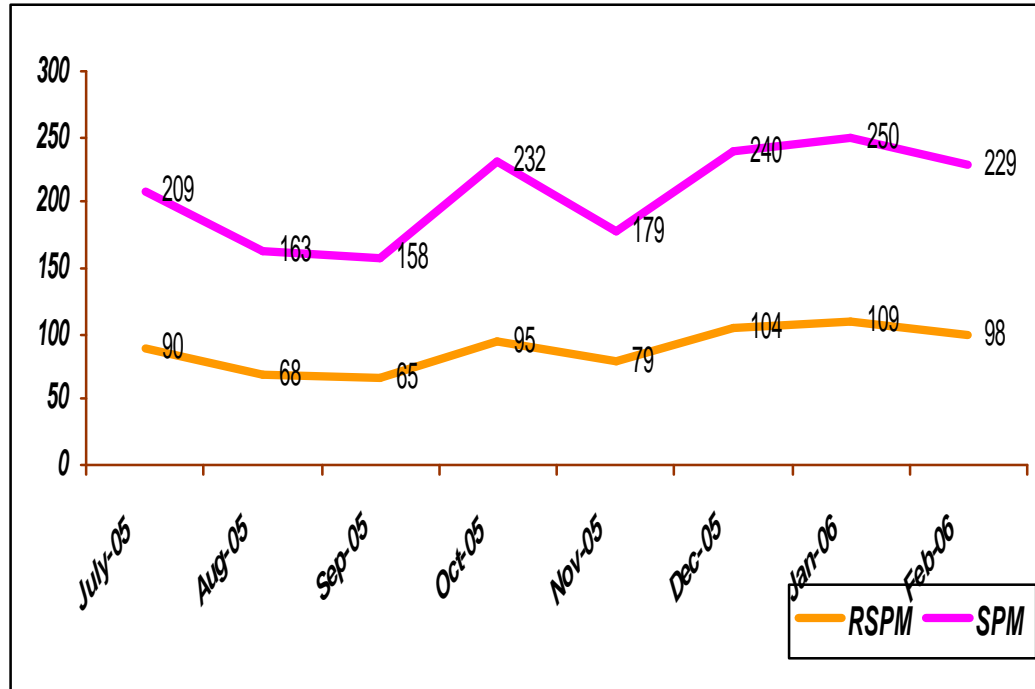
PARAMETER (LIMIT)	POSITION ON FEB-06	
SPM (200)	256	28 % HIGH
RSPM (100)	115	15 % HIGH
SO2 (80)	11.8	WITHIN LIMIT
NOX (80)	24.5	WITHIN LIMIT

RESIDENTIAL

CPCB + GPCB

RESULTS ARE EXPRESSED IN MICROGRAM PER NORMAL CUBIC METER

AAQM AT Behrampura, NEERI office (NAMP project)



PARAMETER (LIMIT)	POSITION ON FEB-06	
SPM (200)	229	14.5 % HIGH
RSPM (100)	98	WITHIN LIMIT
SO2 (80)	11	WITHIN LIMIT
NOX (80)	22.5	WITHIN LIMIT

RESIDENTIAL

CPCB + GPCB

RESULTS ARE EXPRESSED IN MICROGRAM PER NORMAL CUBIC METER

MONTH	AVERAGE RSPM OF 11 STATIONS	AVERAGE SPM OF 11 STATIONS
December/04	185	374
January/05	160	389
February/05	148	390
March/05	134	389
April/05	166	427
May/05	144	366
June/05	121	302
July/05	107	255
August/05	93	220
September/05	101	242
October/05	131	331
November/05	147	356
December/05	146	363
January/06	144	361
February/06	152	364
AVERAGE OF ALL MONTHS	135	340

RESULTS ARE EXPRESSED IN MICROGRAM PER NORMAL CUBIC METER

THANKS